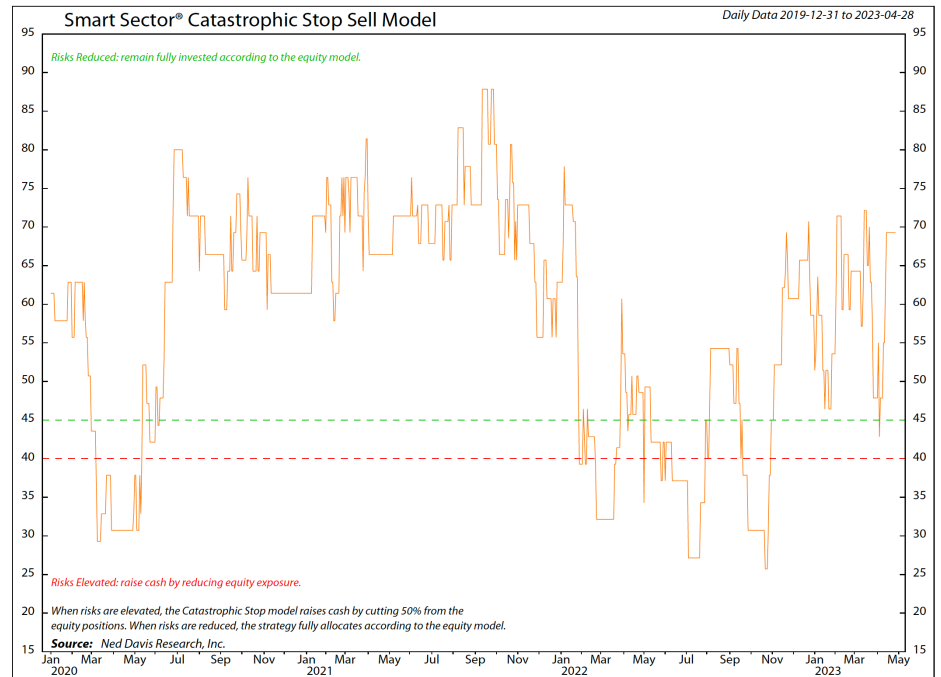


MAY 2023

Catastrophic Stop Update

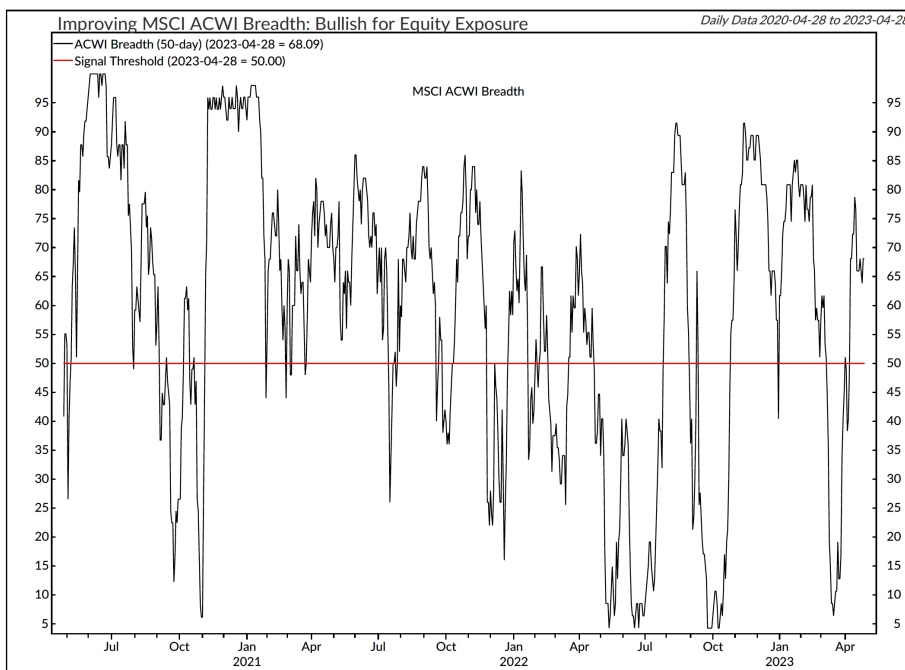
The NDR Catastrophic Sell Stop model combines time-tested, objective indicators designed to identify high-risk periods for the equity market. The model (chart at right) improved from last month and entered May with a fully invested equity allocation recommendation.

Figure 1: Smart Sector® Catastrophic Stop Sell Model



© Copyright 2023 NDR, Inc. Further distribution prohibited without prior permission. All Rights Reserved. See NDR Disclaimer at www.ndr.com/copyright.html. For data vendor disclaimers refer to www.ndr.com/vendorinfo/

Figure 2: Improving MSCI ACWI Breadth: Bullish for Equity Exposure



Customized version of NDRIS_USMMA.RPT InternalSigs_NDRIS



© Copyright 2023 Ned Davis Research, Inc. Further distribution prohibited without prior permission. All Rights Reserved. See NDR Disclaimer at www.ndr.com/copyright.html. For data vendor disclaimers refer to www.ndr.com/vendorinfo/

The model improvement was mostly driven by stronger technicals—stock/bond relative strength, global stock market breadth (chart at left), and stock market short-term trend all improved to bullish levels during the month. In terms of external influences, the breadth for High Yield and Emerging Market bonds and global trade (as measured by the Baltic Dry Index) remains bullish, while high-yield option-adjusted spreads remain bearish.

If stock volume demand outpaces supply and spreads narrow, then it could indicate that the rally could be sustained. Conversely, if the stock market weakens in the near term and investors return to fears of a recession, the stock market rally could be short-lived.

Global Market Update

The ACWI ex. U.S. Total Return Index increased by over 180 basis points in April. The index has risen by more than 175 bps for five of the last seven months. Among the strongest-performing markets were Poland, United Arab Emirates, Hungary, Saudi Arabia, and Colombia, while the largest underperformers included China, Turkey, Thailand, Netherlands, and Taiwan.

The global economy continued to accelerate through March, according to the S&P Global Purchasing Managers' Index (PMI) readings. The global composite PMI jumped to its highest level in nine months (chart at bottom). The reading marked the fourth straight increase in the PMI and the second straight month of expansion. When the

global economy has been accelerating, it's historically been associated with outperformance in global equities.

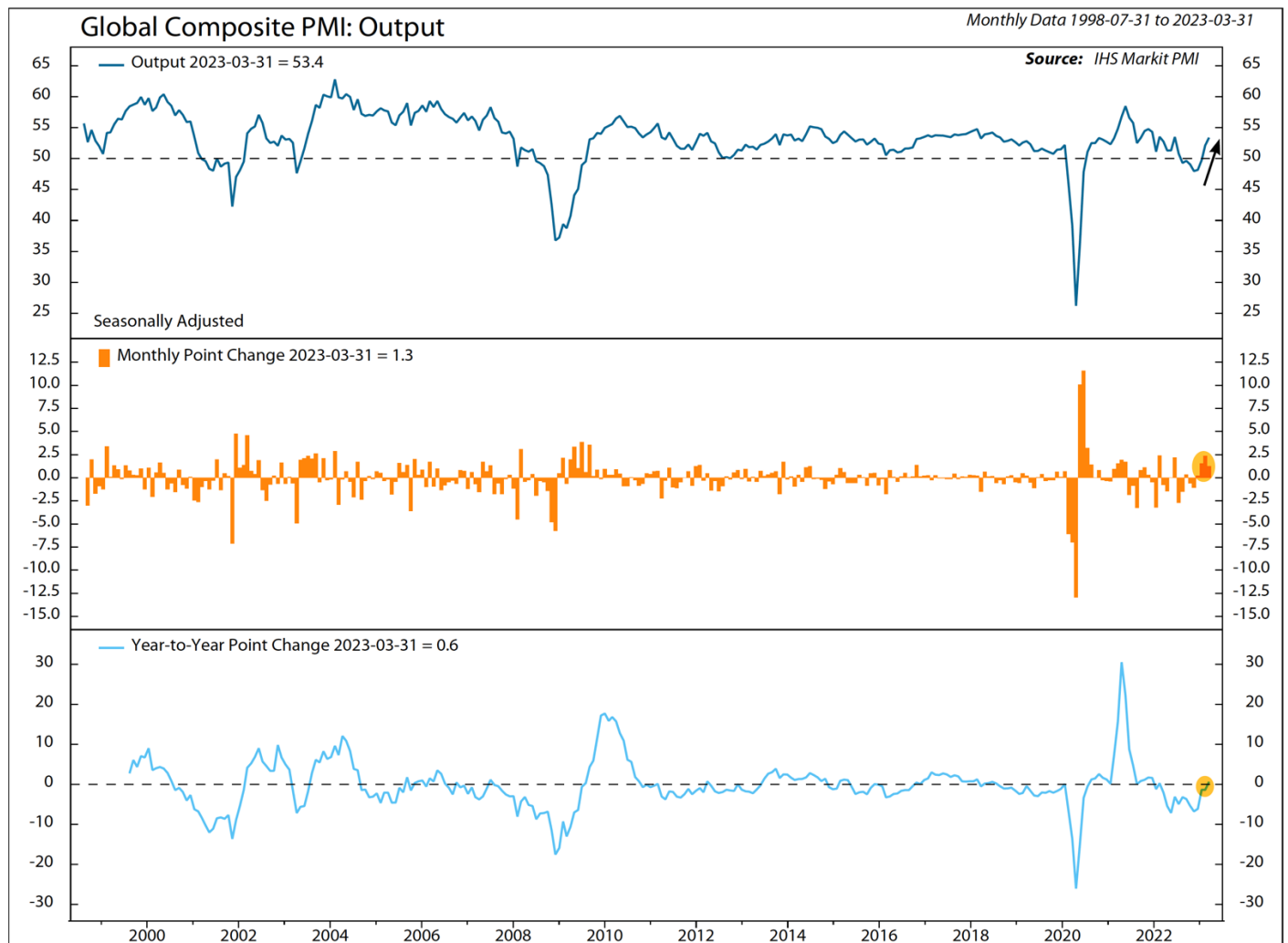
Unfortunately, the global economic outlook reflected some cracks under the surface. Although services sector growth remained broad and healthy, the manufacturing PMI slipped back into contraction territory, while breadth in the sector weakened significantly. Moreover, the composite future output index ticked down for the first time in five months. While it remains elevated, it suggests that global growth may peak in the first half of the year.

History suggests that the past year's tight monetary policy will continue to limit the upside in the global economy in the

coming months. The March banking crisis provides another overhang to the global economy, as it will likely be associated with tighter credit conditions over the near term. Moreover, stubbornly high inflation, especially in the services sector, may keep central banks tighter for longer, increasing the risk of recession, possibly in late 2023 or early 2024.

Entering May, the non-U.S. equity Core model overweighted France, Germany, and Switzerland while underweighting Australia, Japan, and China. Canada and U.K. are market-weight. The Explore model favored the Netherlands, Mexico, Singapore, South Korea, the Philippines, and Spain.

Figure 3: Global PMI: Output



ICS_214.RPT

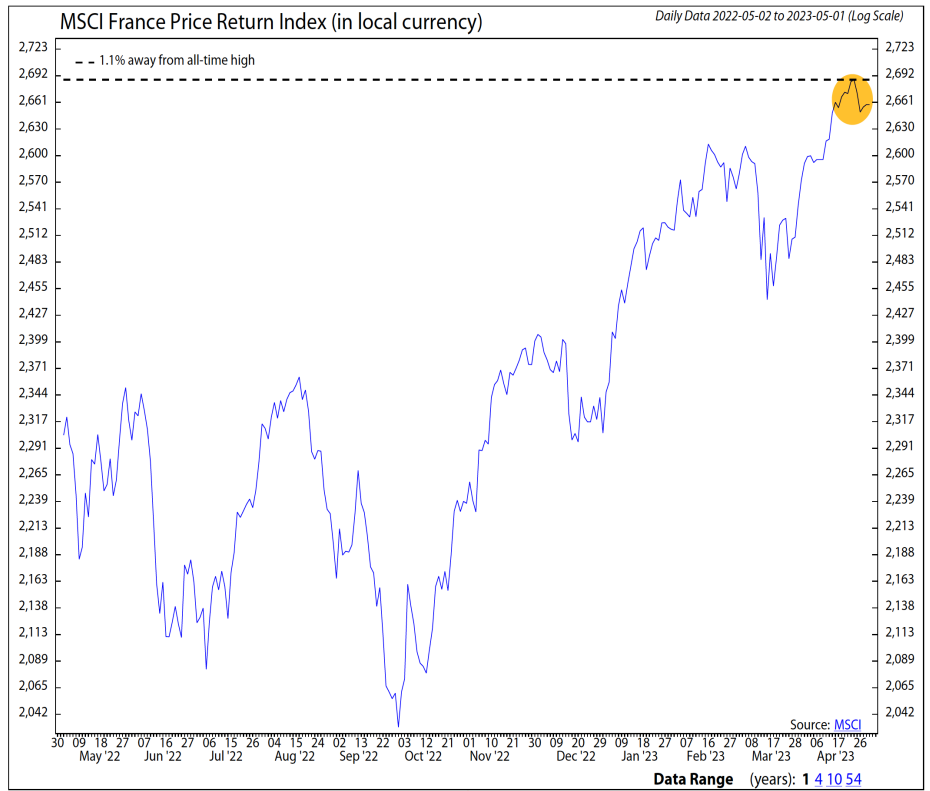


© Copyright 2023 NDR, Inc. Further distribution prohibited without prior permission. All Rights Reserved. See NDR Disclaimer at www.ndr.com/copyright.html For data vendor disclaimers refer to www.ndr.com/vendorinfo/

Core Allocations

France's allocation continues to be above benchmark weighting. The market generated a new all-time high toward the end of April (chart at right). All of France's indicators in this model are bullish. The trend is positive as the market trades above its 50- and 200-day moving averages, and breadth has strongly improved. The strengthening technical indicators reflect macroeconomic and fundamental improvement. France's services PMI remains in expansionary territory. Earnings growth continues to be positive on a year-over-year basis.

Figure 4: MSCI France Price Return Index (in local currency)



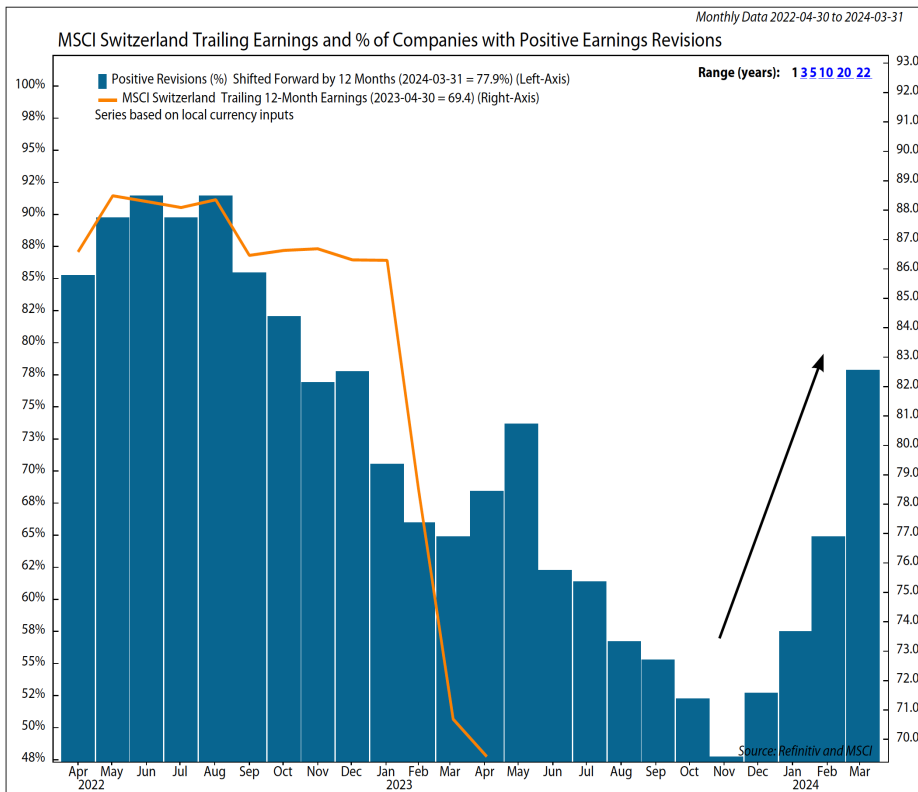
ICS_35.RPT



© Copyright 2023 NDR, Inc. Further distribution prohibited without prior permission. All Rights Reserved. See NDR Disclaimer at www.ndr.com/copyright.html. For data vendor disclaimers refer to www.ndr.com/vendorinfo/

Figure 5: MSCI Switzerland Trailing Earnings and % of Companies with Positive Earnings Revisions

Switzerland's allocation continues to be above benchmark weighting. One-year forward earnings estimates have been increasing (chart at left), as UBS's takeover of Credit Suisse likely reduced financial disruptions. The Swiss National Bank is expected to end its tightening cycle in June, which should reduce monetary headwinds. Technical indicators reflect the improving macro-outlook as trend, momentum, and breadth indicators are bullish.



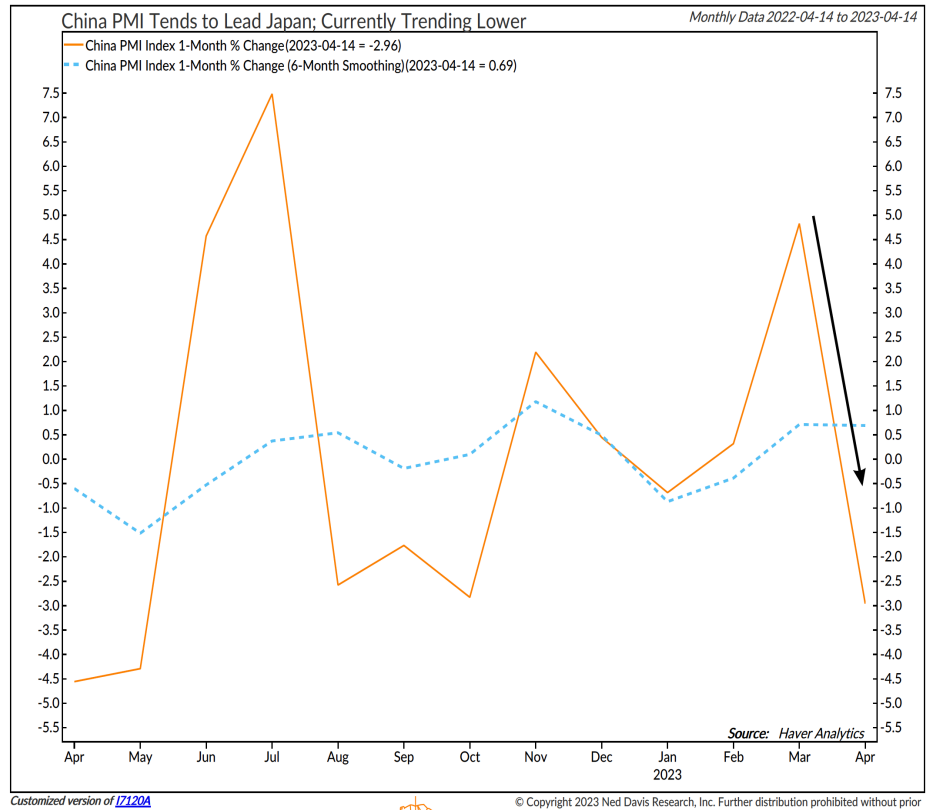
ICS_27A.RPT



© Copyright 2023 NDR, Inc. Further distribution prohibited without prior permission. All Rights Reserved. See NDR Disclaimer at www.ndr.com/copyright.html. For data vendor disclaimers refer to www.ndr.com/vendorinfo/

Japan fell further underweight. Although near-term earnings growth has improved and monetary policy remains easy, there are risks. The market's trend reversed lower on extremely optimistic sentiment and a weakening manufacturing outlook in China (chart at right), which tends to lead Japanese economic activity.

Figure 6: China PMI Trends to Lead Japan: Currently Trending Lower

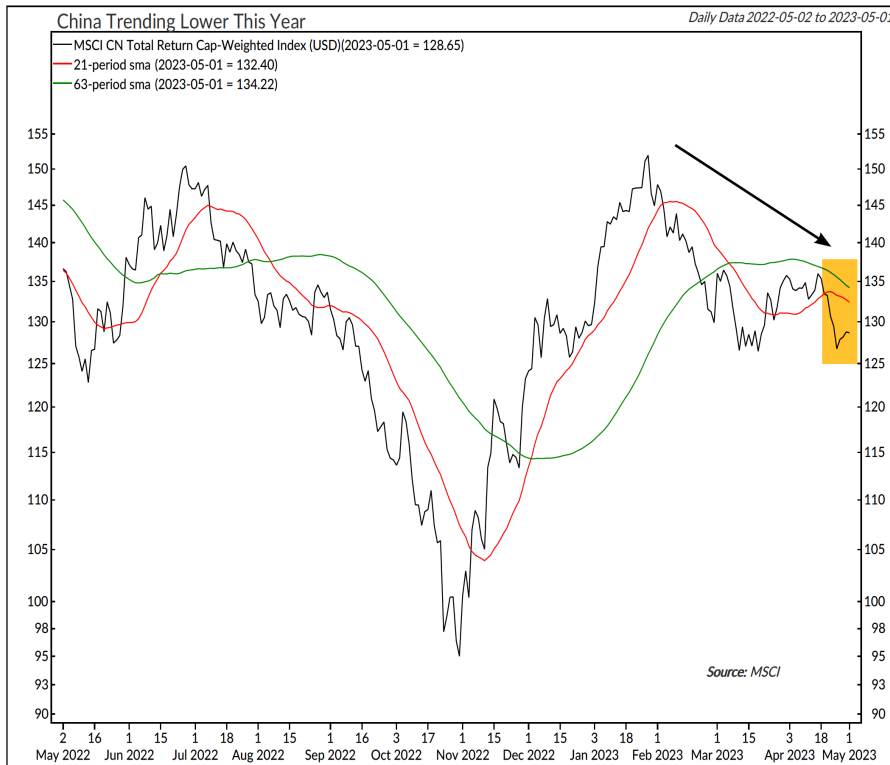


Customized version of I7120A



© Copyright 2023 Ned Davis Research, Inc. Further distribution prohibited without prior permission. All Rights Reserved. See NDR Disclaimer at www.ndr.com/copyright.html. For data vendor disclaimers refer to www.ndr.com/vendorinfo/

Figure 7: China Trending Lower This Year



Customized version of SSKU_CORE_REPORT.RPT



© Copyright 2023 Ned Davis Research, Inc. Further distribution prohibited without prior permission. All Rights Reserved. See NDR Disclaimer at www.ndr.com/copyright.html. For data vendor disclaimers refer to www.ndr.com/vendorinfo/

China continues to receive below benchmark allocation. China's economy rapidly accelerated due to the end of zero COVID. The official composite PMI jumped to its best level since data began in 2017. The acceleration, however, was led entirely by the services sector, as manufacturing nearly ground to a halt. Services growth is likely to ease as the year progresses as pent-up demand from the lockdowns is satisfied. With manufacturing lagging, this suggests that China's growth for this year will mostly be front-loaded. The market's relative strength, absolute price trend (chart at left), and momentum all reflect expected headwinds. Emerging Market high-yield credit spreads have widened, showing concerns in the fixed-income market.

Explore Opportunities

To select smaller markets, the fund uses a multi-factor technical ranking system to choose the top markets. Among the top-ranked Explore markets are the Netherlands, Mexico, Singapore, South Korea, the Philippines, and Spain:

- Singapore, Netherlands, South Korea, Mexico, Spain, and Turkey have favorable price trends as their 50-day moving averages trade above their 200-day moving averages.

- Over the last five days, Singapore has been more than one standard deviation oversold, which historically has provided a near-term bounce opportunity.

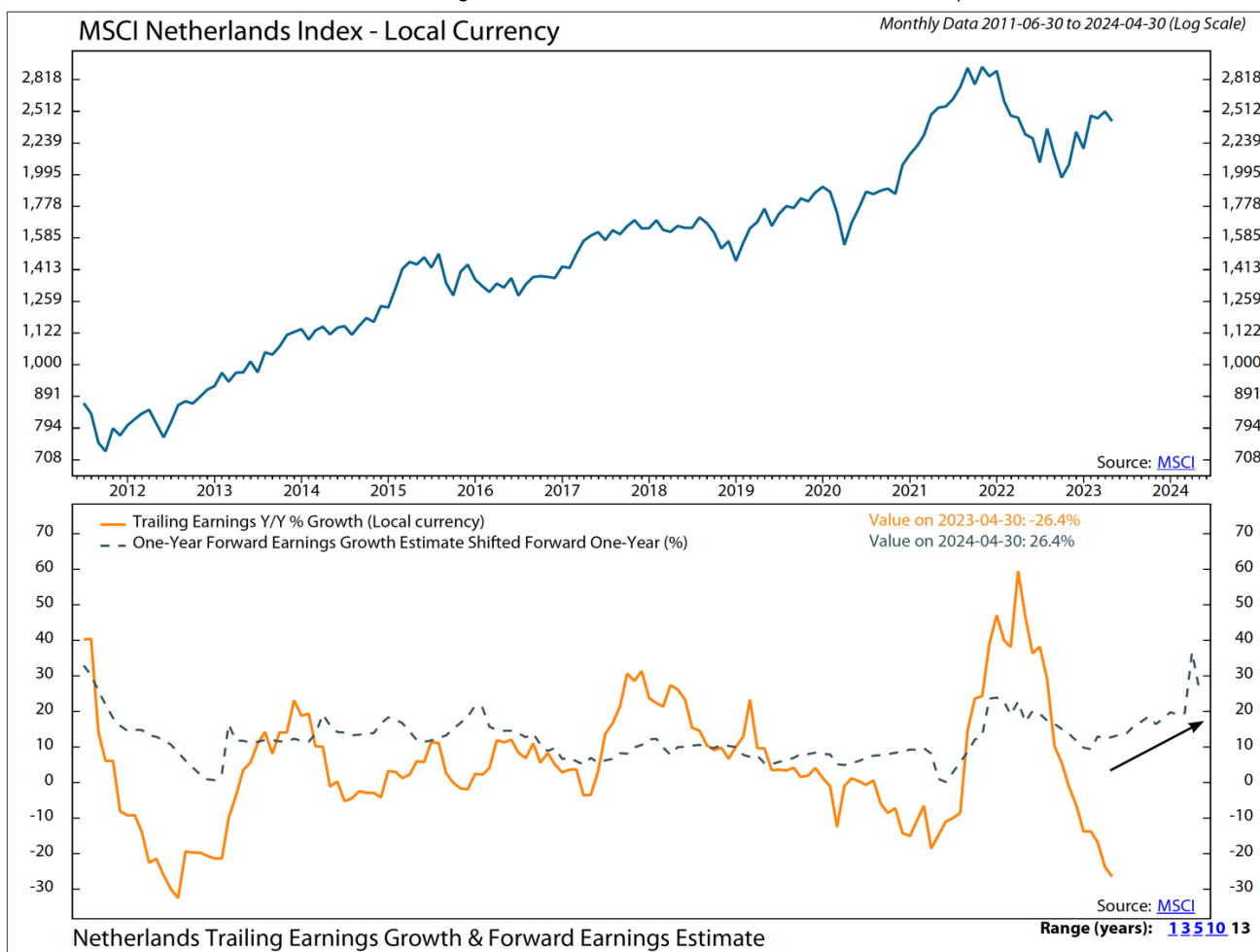
- South Korea and Singapore possess cyclically adjusted price-to-earnings ratios (long-term valuation metrics) trading below their historical medians.

- Singapore and Netherlands (chart at bottom) have double-digit one-year forward earnings growth estimates.

Mexico and the Netherlands are supported by positive earnings revisions. Over the past three months, the percentages of increasing estimates (for the current fiscal year) are 81.1% and 85.7%, respectively.

The forward P/Es for our Explore holdings are Netherlands (17.3x), Mexico (12.4x), Singapore (12.2x), South Korea (14.1x), Philippines (13.8x), and Spain (10.3x). All are below the U.S. forward P/E of 18.4x. (Using MSCI Country Indexes.)

Figure 8: MSCI Netherlands Index – Local Currency



ICS_27.RPT



© Copyright 2023 NDR, Inc. Further distribution prohibited without prior permission. All Rights Reserved. See NDR Disclaimer at www.ndr.com/copyright.html For data vendor disclaimers refer to www.ndr.com/vendorinfo/

Summary

The Catastrophic Stop model remains with a fully invested Core and Explore allocation entering May.

The non-U.S. equity Core model overweighted France, Germany, and

Switzerland while underweighting Australia, Japan, and China. Canada and U.K. are market-weight. The Explore model favored the Netherlands, Mexico, Singapore, South Korea, the Philippines, and Spain.

The models combine macro, fundamental, technical, and sentiment indicators to determine opportunities and identify risks in an objective, weight-of-the-evidence approach.

Strategy Description

- The Smart Sector® International strategy combines three Ned Davis Research quantitative investment strategies: The Core International, Explore International, and the NDR Catastrophic Stop.

The process is based on the weight of the evidence

Core Allocation

- The fund begins by overweighting and underweighting the largest non-U.S. equity markets based on Ned Davis Research's proprietary models.
- Each of the models utilize market-specific, weight-of-the-evidence composites of fundamental, economic, technical, and behavioral indicators to determine each area's probability of outperforming the ACWI ex. U.S. Markets are weighted accordingly relative to benchmark weightings.

Explore Allocation

- To select smaller markets, the fund uses a multi-factor technical ranking system to choose the top markets. The markets with the highest rankings split the non-Core model allocation equally.

When market risks become extraordinarily high — reduce your portfolio risk

- The model remains fully invested *unless the Ned Davis Research Catastrophic Sell Stop (CSS) model is triggered*, whereupon the equity-invested position is trimmed to 50%.
- The NDR Catastrophic Sell Stop model combines time-tested, objective indicators designed to identify periods of high risk for the broad U.S. equity market. The model uses price-based, breadth, deviation from trend, fundamental, economic, interest rate, behavioral and volatility-based indicator composites.

When market risks return to normal — put your money back to work

- When the NDR CSS model moves back to bullish levels, indicating lower risk, the strategy immediately moves back to fully invested.

For more information, please contact us at:

Day Hagan Asset Management

1000 S. Tamiami Trl

Sarasota, FL 34236

Toll Free: (800) 594-7930

Office Phone: (941) 330-1702

Website: <https://dayhagan.com/> or <https://dhfunds.com/>

Please see important disclosures at the end of this report.

Ned Davis Research Disclaimer:

The data and analysis contained within are provided "as is" and without warranty of any kind, either express or implied. The information is based on data believed to be reliable, but it is not guaranteed. NDR DISCLAIMS ANY AND ALL EXPRESS OR IMPLIED WARRANTIES, INCLUDING, BUT NOT LIMITED TO, ANY WARRANTIES OF MERCHANTABILITY, SUITABILITY OR FITNESS FOR A PARTICULAR PURPOSE OR USE. All performance measures do not reflect tax consequences, execution, commissions, and other trading costs, and as such investors should consult their tax advisors before making investment decisions, as well as realize that the past performance and results of the model are not a guarantee of future results. The Smart Sector® Strategy is not intended to be the primary basis for investment decisions and the usage of the model does not address the suitability of any particular in Fixed Income investment for any particular investor.

Using any graph, chart, formula, model, or other device to assist in deciding which securities to trade or when to trade them presents many difficulties and their effectiveness has significant limitations, including that prior patterns may not repeat themselves continuously or on any particular occasion. In addition, market participants using such devices can impact the market in a way that changes the effectiveness of such devices. NDR believes no individual graph, chart, formula, model, or other device should be used as the sole basis for any investment decision and suggests that all market participants consider differing viewpoints and use a weight of the evidence approach that fits their investment needs.

DISCLOSURES

Past performance does not guarantee future results. No current or prospective client should assume future performance of any specific investment or strategy will be profitable or equal to past performance levels. All investment strategies have the potential for profit or loss. Changes in investment strategies, contributions or withdrawals and economic conditions may materially alter the performance of your portfolio. Different types of investments involve varying degrees of risk, and there can be no assurance that any specific investment or strategy will be suitable or profitable for a client's portfolio. Historical performance results for investment indexes and/or categories generally do not reflect the deduction of transaction and/or custodial charges or the deduction of an investment management fee, the incurrence of which would have the effect of decreasing historical performance results. There can be no assurances that a portfolio will match or outperform any particular benchmark.

Day Hagan Asset Management is registered as an investment adviser with the United States Securities and Exchange Commission. SEC registration does not constitute an endorsement of the firm by the Commission nor does it indicate that the adviser has attained a particular level of skill or ability.

References to "NDR" throughout refer to Ned Davis Research, Inc. Clients engaging in this strategy will be advised by Day Hagan and will not have a contractual relationship with NDR. Day Hagan purchases signals from NDR, and Day Hagan is responsible for executing transactions on behalf of its clients and has discretion in how to implement the strategy.

NDR is a registered as an investment adviser with the Securities and Exchange Commission (SEC). NDR serves as the Signal Provider in connection with this strategy. The information provided here has not been approved or verified by the SEC or by any state or other authority. Additional information about NDR also is available on the SEC's website at <https://www.adviserinfo.sec.gov/>. This material is provided for informational purposes only and is not intended as an offer or solicitation with respect to the purchase or sale of any security or other financial instrument or to participate in any trading strategy. NDR's strategies, including the model discussed in this publication, are intended to be used only by sophisticated investment professionals.

There may be a potential tax implication with a rebalancing strategy. Re-balancing involves selling some positions and buying others, and this activity results in realized gains and losses for the positions that are sold. The performance calculations do not reflect the impact that paying taxes would have, and for taxable accounts, any taxable gains would reduce the performance on an after-tax basis. This reduction could be material to the overall performance of an actual trading account. NDR does not provide legal, tax or accounting advice. Please consult your tax advisor in connection with this material, before implementing such a strategy, and prior to any withdrawals that you make from your portfolio.

There is no guarantee that any investment strategy will achieve its objectives, generate dividends or avoid losses.

© 2023 Ned Davis Research, Inc. | © 2023 Day Hagan Asset Management, LLC